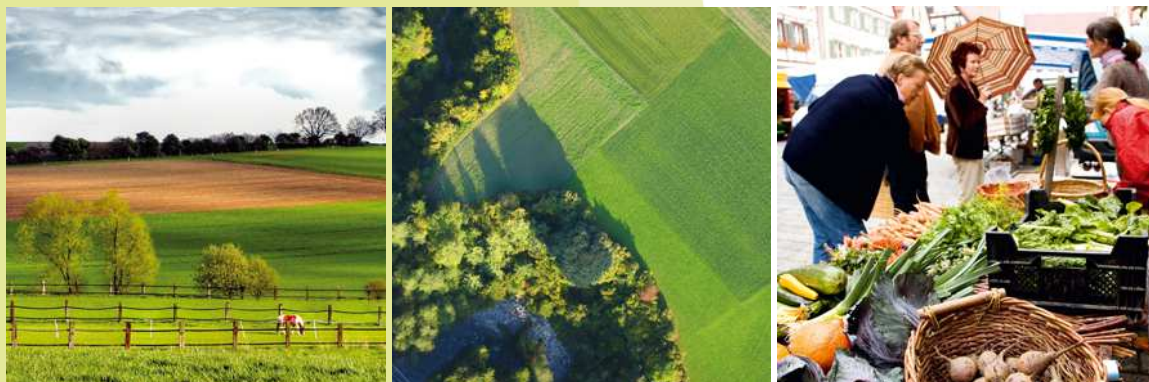


Instruments of effective grassland protection - German Experiences



Global Forum for Food and Agriculture (GFFA)

International Green Week

Berlin, 20.1.2012

Jörg Schramek (IfLS)



Institut für Ländliche Strukturforchung
an der Johann Wolfgang Goethe-Universität Frankfurt am Main



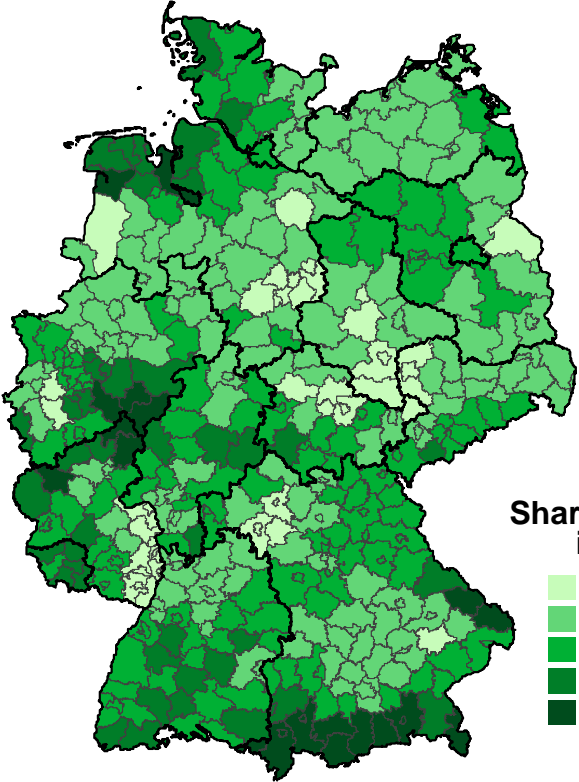
Johann Heinrich
von Thünen-Institut

Institut für Ländliche Räume

Content

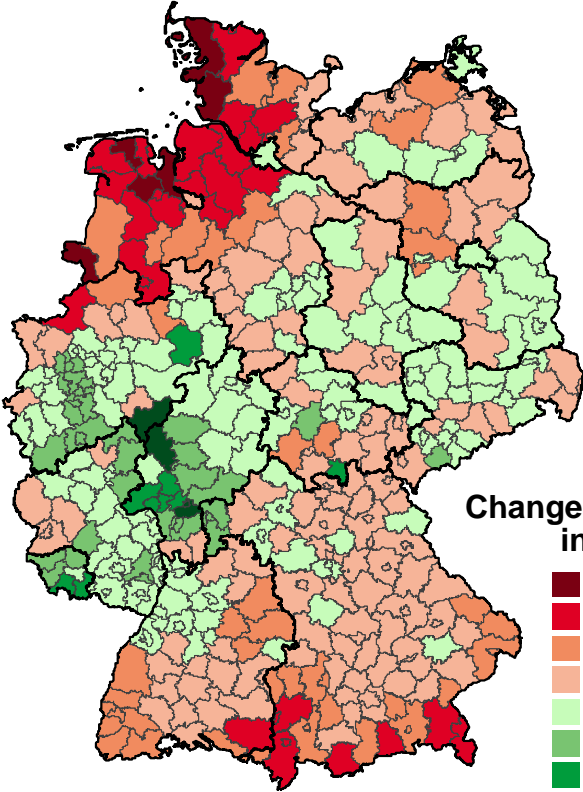
- Land use changes in Germany with focus on permanent grassland
- Overview on instruments with relevance for grassland protection
- Strengths & Weaknesses of different instruments concerning grassland protection
- Conclusion

Share of Grassland on UAA (2007) and Change of Grassland Area in % of the UAA (1999-2007)



Share of Grassland in % of UAA

Lightest Green	= 10
Light Green	> 10 - = 25
Medium Green	> 25 - = 50
Dark Green	> 50 - = 70
Darkest Green	> 70



Change of Grassland Area in % of UAA

Dark Red	= -10,0
Red	> -10,0 - = -5,0
Orange	> -5,0 - = -2,5
Light Orange	> -2,5 - = 0,0
Lightest Green	> 0,0 - = 2,5
Light Green	> 2,5 - = 5,0
Medium Green	> 5,0 - = 10,0
Darkest Green	> 10,0

Source: Own calculations, based on data of the FDZ, Farm Structural Survey 1999 und 2007.

Driving Forces for Land Use Changes and the Conversion of Grassland



- Loss of grassland in regions with high grazing livestock density
→ conversion into arable land
 - Stable and little expansion in regions with low grazing livestock density
 - High and stable livestock densities in specialized dairy farms, decreasing grazing livestock in areas with low livestock density
 - Farms with biomass production for biogas have an above average rate of grassland conversion
 - Loss of grassland due to the abandonment of agricultural production
→ development of forests but difficult to quantify
- Specialised dairy farms & farms with biomass production are in particular drivers for the conversion of grassland into arable land

Instruments with Relevance for Grassland Protection

- **Legislative Instruments**
- EU-Directives
 - Conservation of natural habitats and of wild fauna and flora → **Natura 2000**
 - Water Framework Directive → **Federal Water Act**
- **Nature Conservation Act**
- **Renewable Energy Act & Biofuels Quota Act**
- **Common Agricultural Policy (CAP)**
- 1st Pillar: **Cross Compliance**
 - Standards concerning the maintenance of permanent grassland
- 2nd Pillar: **Agri-Environmental Programmes**; support of **Less Favoured Areas**
- **Other Instruments**
- Information and Advisory Services for Farmers
- Market based Instruments

Strengths & Weaknesses of Legislative Instruments concerning Grassland Protection



Strengths

Water Act



- Little conversion rates in flood plains
- Protection in buffer zones (5-10 meters) at riparian zones

Natura 2000



- Protection of priority natural habitat types ...

Nature Conservation Act



- Maintenance of grassland in protected areas with high standards (Nature reserves, National parks)

Renewable Energy Act & Biofuels quota Act



- Amendments in the 2 Acts will lead to improvements but not solve the problem

Weaknesses

- ... **but** often difficult to control – conversion of grassland is not forbidden
- Implementation of requirements for „good agricultural practices“ is lacking → still conversion of grassland on steep slopes and moors
- Support of biomass for renewable energy production and for biofuels have caused an increase of the acreage of arable crops (maize, rape)

Strengths & Weaknesses of CAP-Instruments concerning Grassland Protection



Strengths

Weaknesses

Cross Compliance



- Ratio of permanent pasture in relation to the total agricultural area (referring to 15 May 2003) has to be maintained ...
- Since 2011 in addition: Site-specific protection in designated areas (flood plains and nature reserves)

Agri-Environmental Programmes



- Grassland-extensification (entire farm) contributes to maintenance of extensive farming in less favoured areas...
- Site-specific grassland-extensification with focus on nature protection and extensification of farming is effective...

Less Favoured Areas



- Supports the maintenance of grassland in mountainous areas

- ... **but** up to 5% changes are allowed (net effect at „Bundesland“- level → grassland loss on one site might be compensated by sowing on another site (species-rich areas are not protected)
- ... **but** is less effective in intensively used forage areas (conversion of grassland is forbidden for entire farm)
- ... **but** farmers are reluctant to take up measures supporting the conversion of arable land into grassland.
- ... **but** less effective in „other“ less favoured areas.

Importance of Information and Advisory Services



- Integrated Advisory Services for farmers will be necessary for an effective grassland protection
- Well trained consultants, who are aware of the different existing legislations, regulations and supportive measures and the strategy behind

Conclusion

- **Grassland-strategy for Germany is required**
 - Defining extent of grassland to be maintained
 - Definition of areas concerning the protection and further development of biodiversity
 - Definition of sensitive areas, where the maintenance of grassland should be mandatory (flooded plains, riparian zones, steep slopes, moor).
 - Outside of sensitive areas → definition of grassland related objectives based on overall concept of regional policy
- **Different instruments have to be adjusted to the common strategy**
 - Clear definition: which instrument for which target
 - Combination of different instruments
 - Instruments to fulfill minimum requirements
 - Top-up agri-environmental schemes for further ecological improvements

Conclusion (2)

■ Cross Compliance and „Greening“ of CAP

- Useful instruments to counteract grassland decline
- „Integrated Administration and Control System“ provides a good basis for monitoring
- „Greening“: Maintenance of permanent grassland at farm level is mandatory according to EU-COM-proposals (5% deviation)
 - **but** problem that the reference situation shall be January 2014
 - Alternative:** re-conversion of grassland, which has been converted 2012-2014
 - Site-specific protection of grassland is not ensured

■ Knowledge transfer

- Is one of the new priorities for the EU-KOM for rural development
 - should be used for advisory services for farmers

Thank you for your interest!



Jörg Schramek

IfLS – Institut für Ländliche Strukturforschung

Kurfürstenstraße 49

60486 Frankfurt am Main

Telefon 069 / 97 266 83-14

www.ifls.de



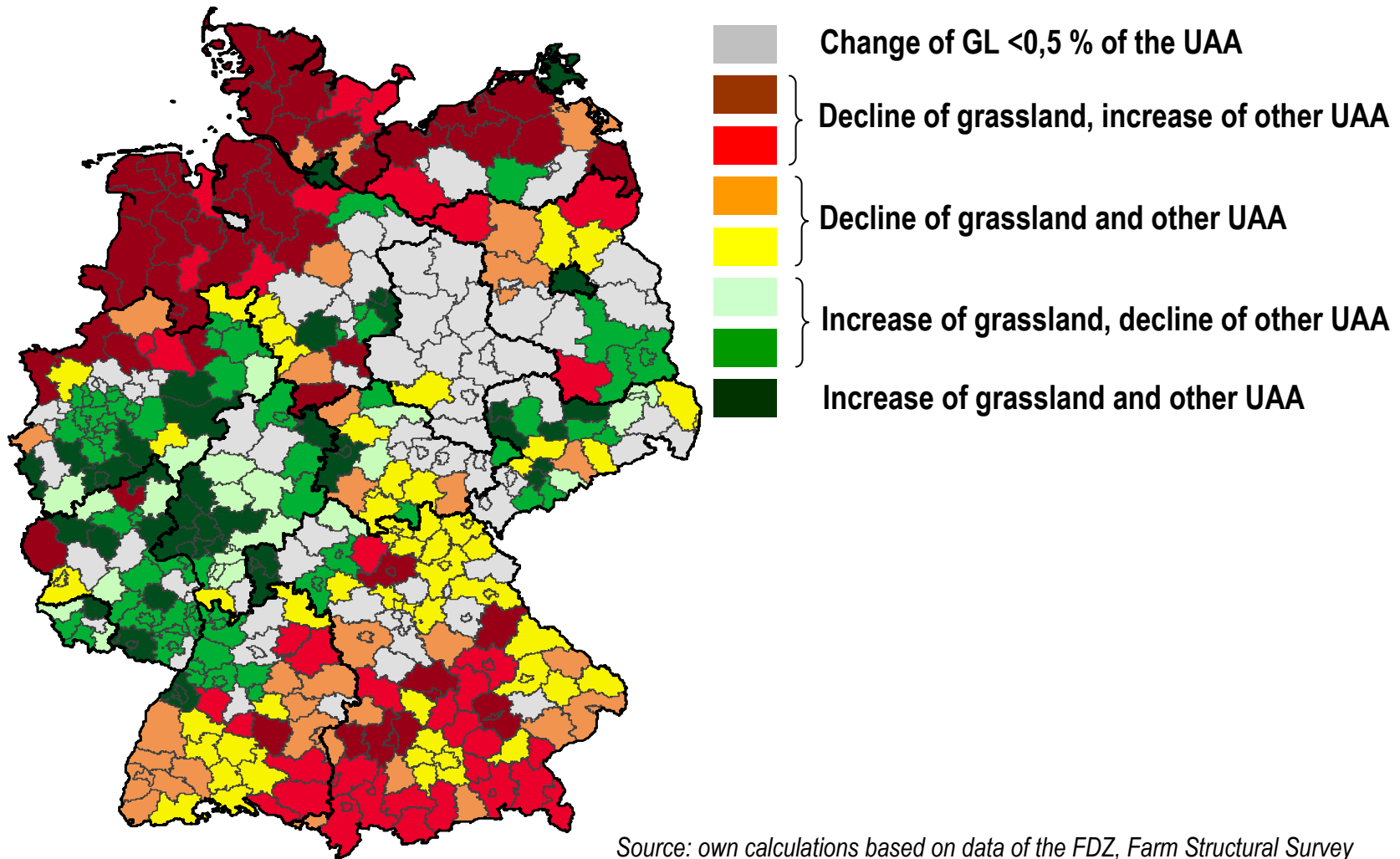
Institut für Ländliche Strukturforschung
an der Johann Wolfgang Goethe-Universität Frankfurt am Main



Johann Heinrich
von Thünen-Institut

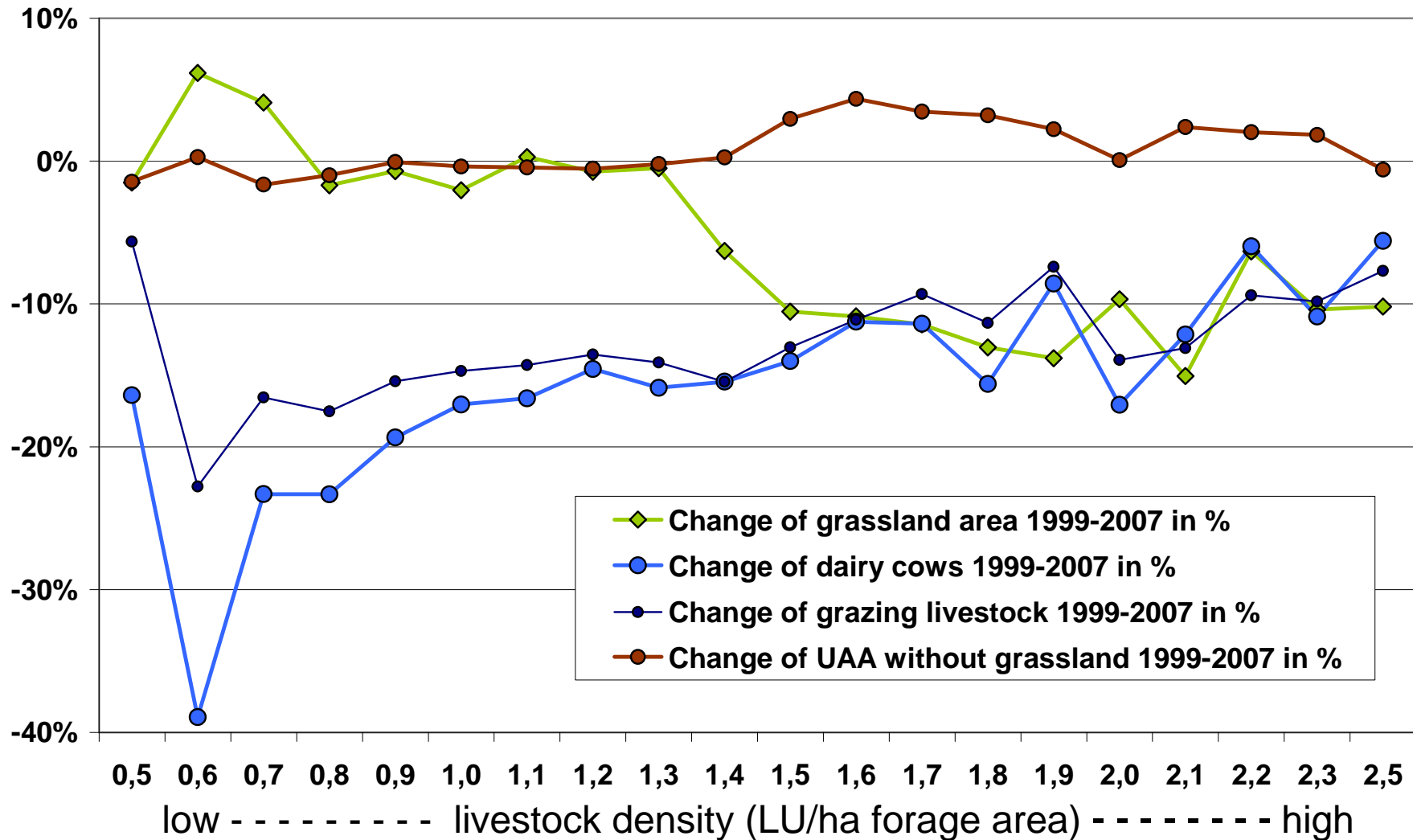
Institut für Ländliche Räume

Regions with different changes of Grassland and UAA Area (1999-2007)



Source: own calculations based on data of the FDZ, Farm Structural Survey 1999 and 2007.

Regional Livestock Density and Changes of UAA, Grassland Area, Dairy and Grazing Livestock (1999-2007)



Source: Own calculations, based on data of the FDZ, Farm Structural Survey 1999 and 2007.